



ELEVATION D

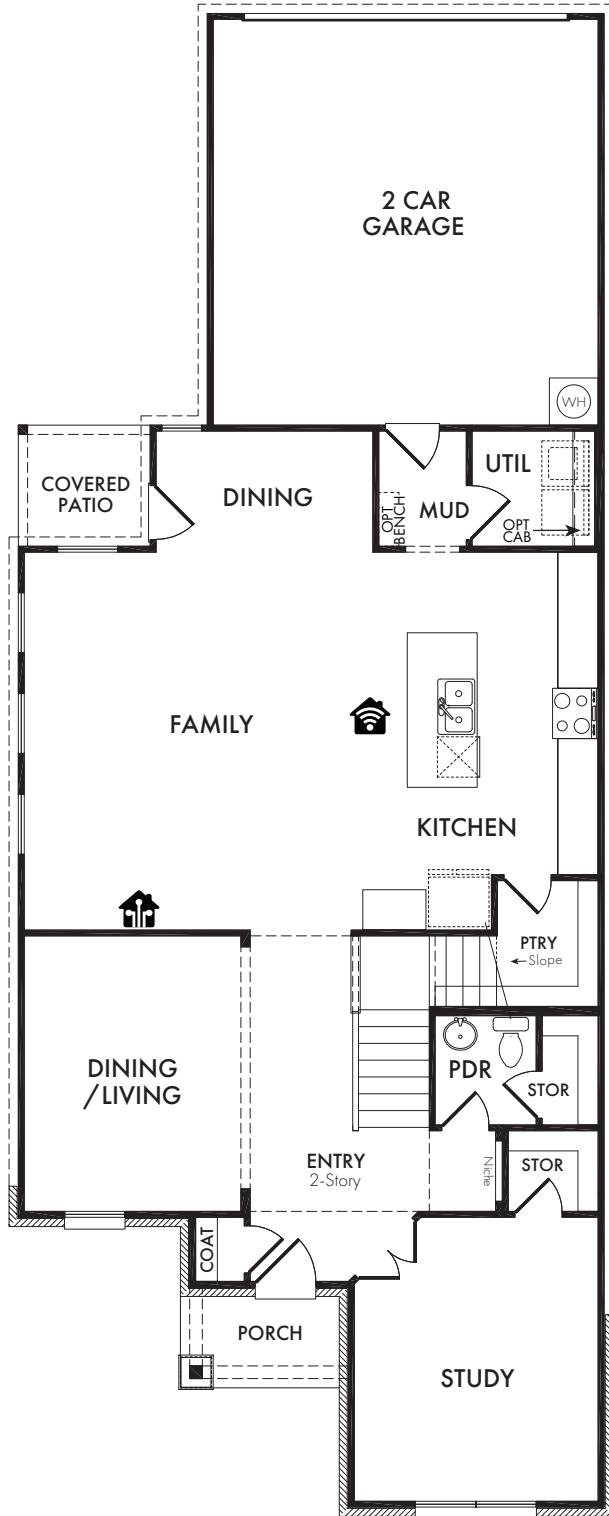


ELEVATION E

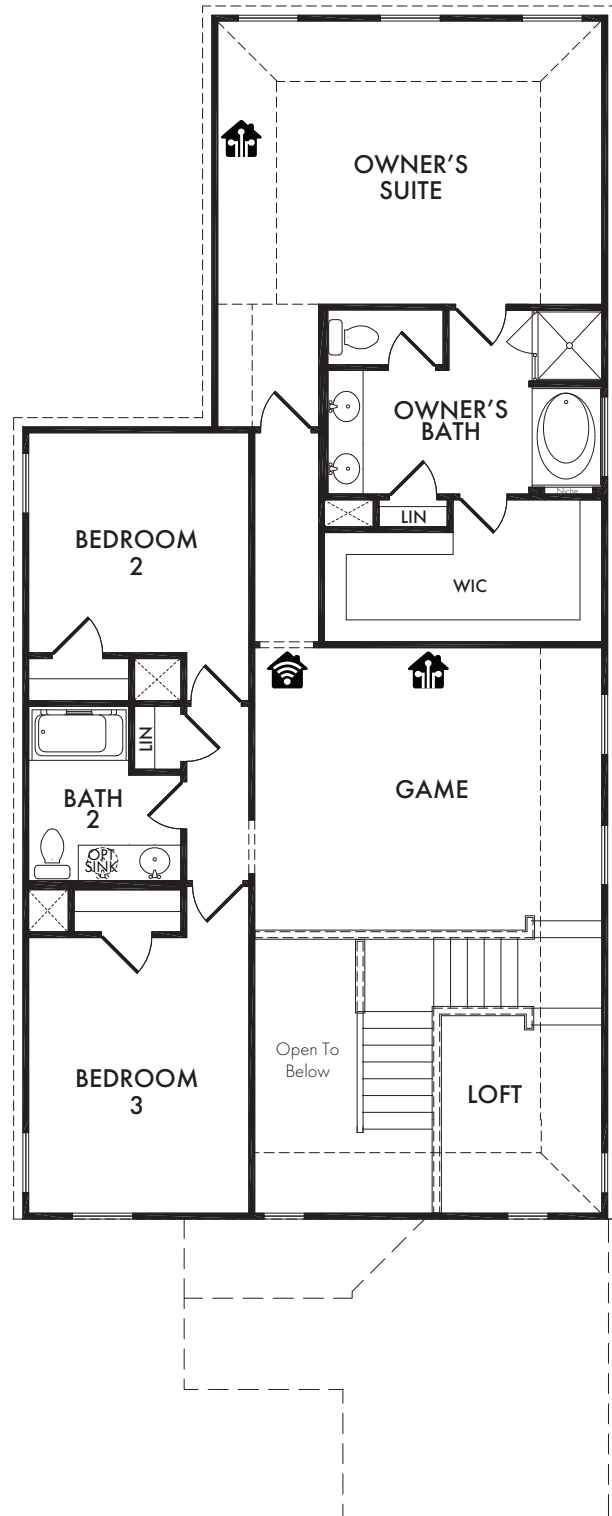


ELEVATION F





FIRST FLOOR

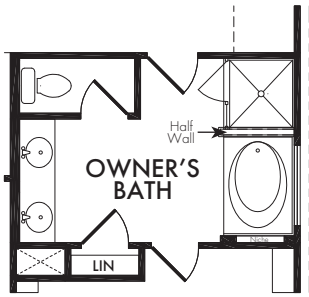


SECOND FLOOR

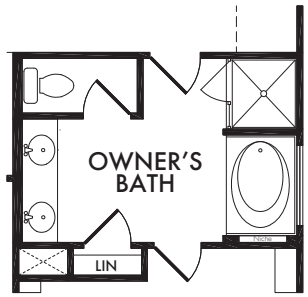
Start *Living Smarter* with Impression Homes.

Living Smarter technology locations are indicated as follows: = Pre-Wired for Wireless Access Point(s) and = RG-6 & Cat6 Media Outlet(s). Ask your sales consultant for more details. Any dimensions and square footage shown, indicated, or stated are approximate and may vary from these art drawings of interior space. Impression Homes reserves the right to change features, prices, and design details without prior notice or obligation. Interior space drawings and exterior paintings are artistic interpretations of concepts and are not drawn to scale. Plan numbers are not intended to represent square footage.





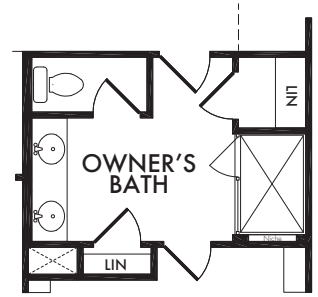
**OPTIONAL  
OWNER'S BATH**  
w/Half Wall  
OPT. #202



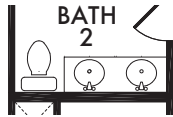
**OPTIONAL  
OWNER'S BATH**  
w/Full Wall  
*Included Standard*  
OPT. #203



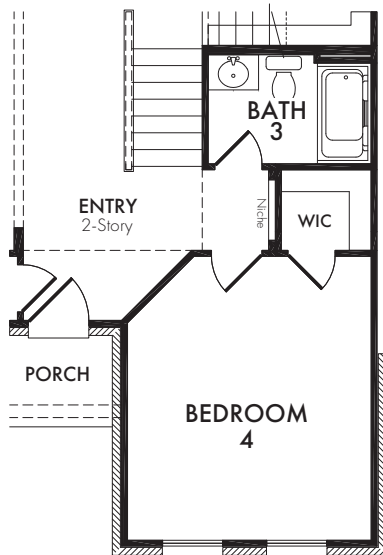
**OPTIONAL  
OWNER'S BATH**  
w/Double Sink Vanity  
*Included Standard*  
OPT. #206



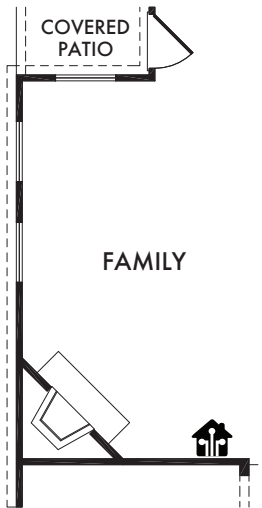
**OPTIONAL  
OWNER'S BATH**  
w/Shower Only  
OPT. #220



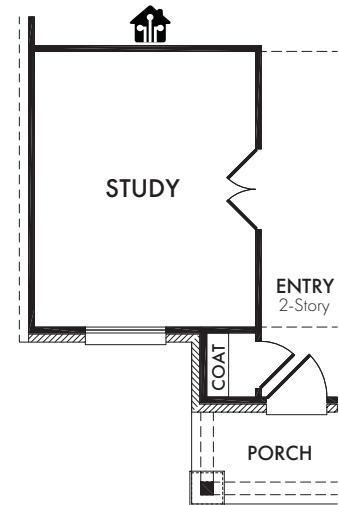
**OPTIONAL BATH 2**  
w/Double Sink Vanity  
OPT. #207



**OPTIONAL  
BEDROOM 4 w/BATH 3**  
OPT. #123

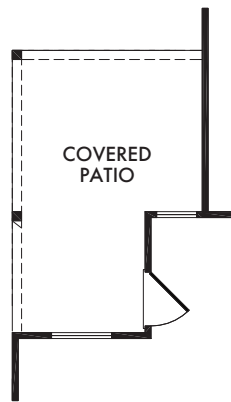


**OPTIONAL FIREPLACE**  
OPT. #300



**OPTIONAL STUDY 2**  
OPT. #119

Living Smarter technology locations are indicated as follows: 🏠 = Pre-Wired for Wireless Access Point(s) and 📶 = RG-6 & Cat6 Media Outlet(s). Ask your sales consultant for more details. Any dimensions and square footage shown, indicated, or stated are approximate and may vary from these art drawings of interior space. Impression Homes reserves the right to change features, prices, and design details without prior notice or obligation. Interior space drawings and exterior paintings are artistic interpretations of concepts and are not drawn to scale. Plan numbers are not intended to represent square footage.



**OPTIONAL  
EXTENDED COVERED PATIO**

OPT. #151