



ELEVATION A

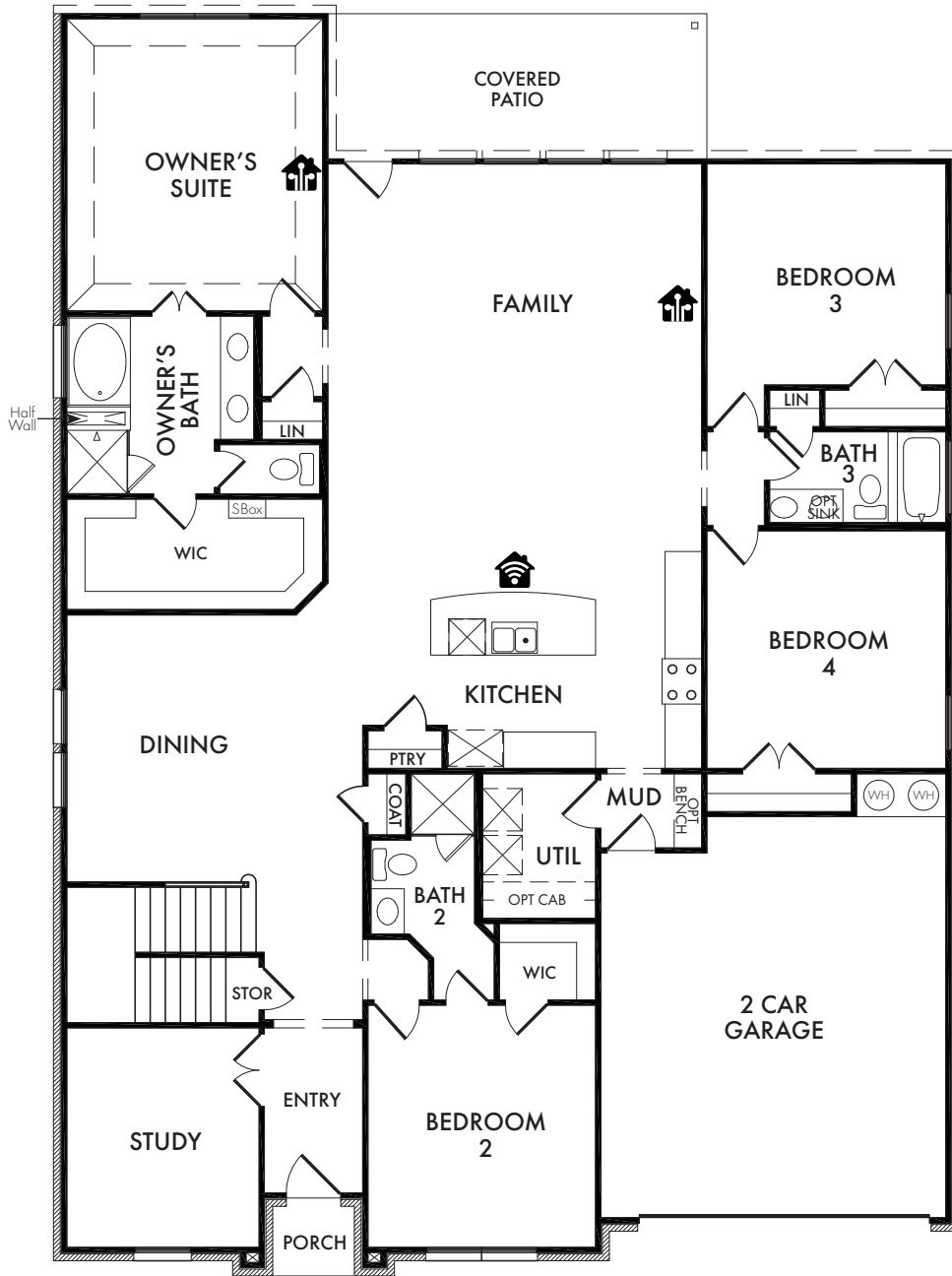


ELEVATION B

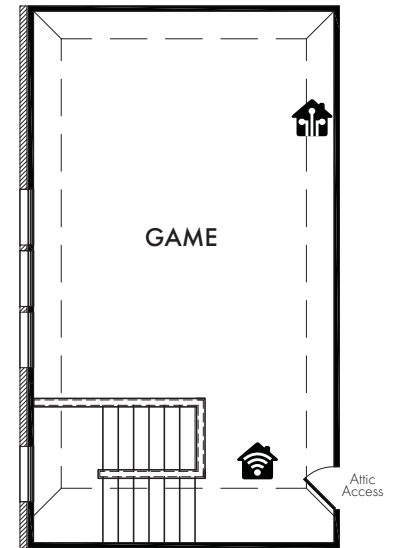


ELEVATION C





FIRST FLOOR



SECOND FLOOR

LS Start *Living Smarter* with Impression Homes.

Living Smarter technology locations are indicated as follows: 🏠 = Pre-Wired for Wireless Access Point(s) and 📶 = RG-6 & Cat6 Media Outlet(s). Ask your sales consultant for more details. Any dimensions and square footage shown, indicated, or stated are approximate and may vary from these art drawings of interior space. Impression Homes reserves the right to change features, prices, and design details without prior notice or obligation. Interior space drawings and exterior paintings are artistic interpretations of concepts and are not drawn to scale. Plan numbers are not intended to represent square footage.



ELEVATION I

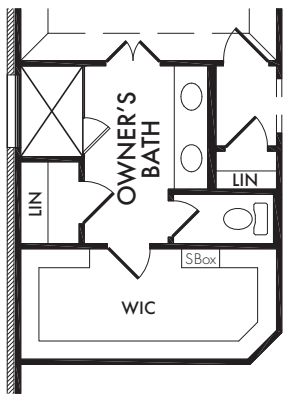


ELEVATION J

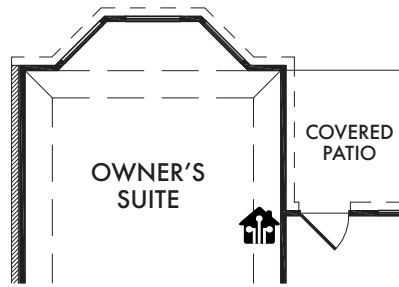


ELEVATION K

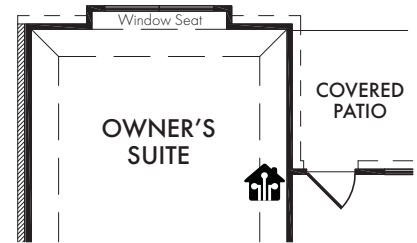




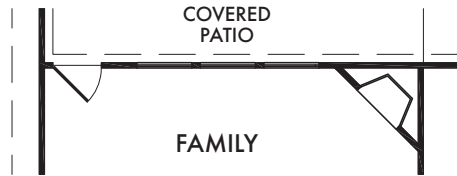
**OPTIONAL
OWNER'S BATH**
w/Shower Only
OPT. #220



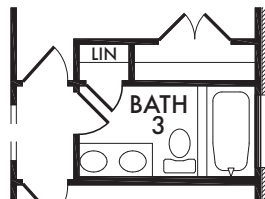
OPTIONAL BAY WINDOW
(Adds Approx. 35 sq. ft.)
OPT. #130



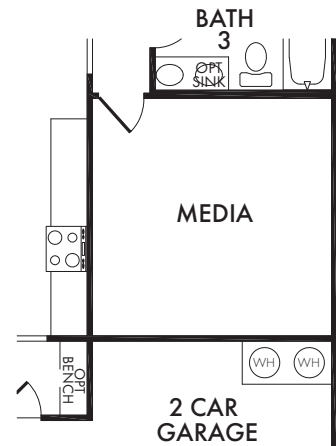
OPTIONAL BOX WINDOW
OPT. #131



OPTIONAL FIREPLACE
OPT. #300

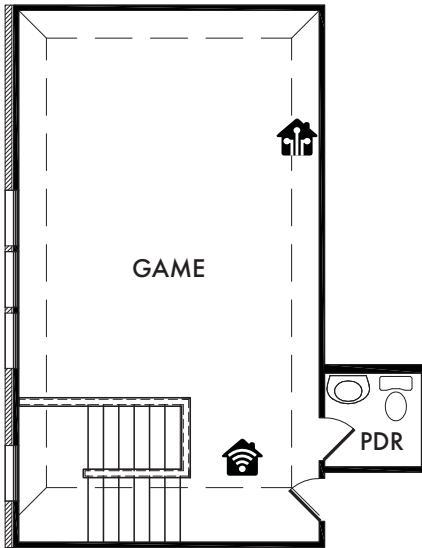


OPTIONAL BATH 3
w/Double Sink Vanity
OPT. #208



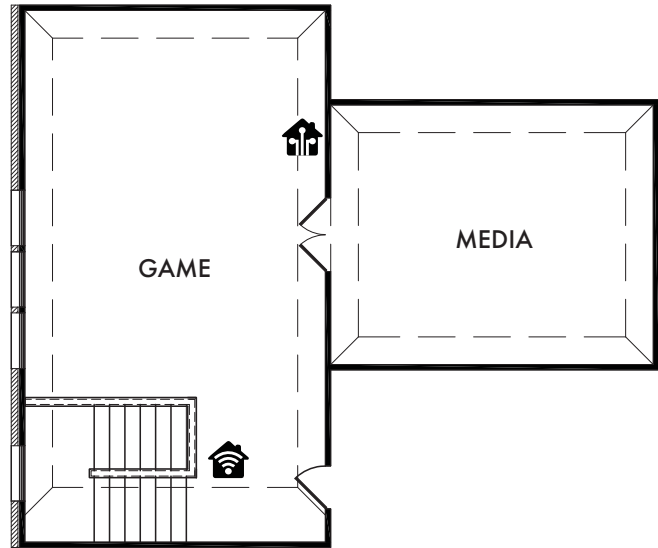
OPTIONAL MEDIA ROOM
OPT. #140

Living Smarter technology locations are indicated as follows: 🏠 = Pre-Wired for Wireless Access Point(s) and 📶 = RG-6 & Cat6 Media Outlet(s). Ask your sales consultant for more details. Any dimensions and square footage shown, indicated, or stated are approximate and may vary from these art drawings of interior space. Impression Homes reserves the right to change features, prices, and design details without prior notice or obligation. Interior space drawings and exterior paintings are artistic interpretations of concepts and are not drawn to scale. Plan numbers are not intended to represent square footage.



**OPTIONAL SECOND FLOOR
POWDER ROOM**
(Adds Approx. 33 sq. ft.)

OPT. #107



**OPTIONAL SECOND FLOOR
MEDIA ROOM**
(Adds Approx. 261 sq. ft.)

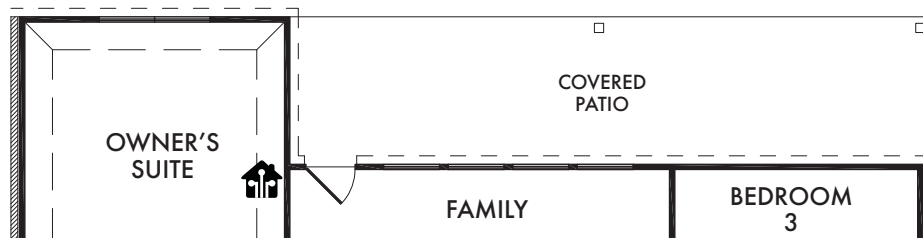
OPT. #142



**OPTIONAL SECOND FLOOR
BEDROOM 5 & BATH 4**
(Adds Approx. 172 sq. ft.)

OPT. #124

Living Smarter technology locations are indicated as follows: 🏠 = Pre-Wired for Wireless Access Point(s) and 🏠 = RG-6 & Cat6 Media Outlet(s). Ask your sales consultant for more details. Any dimensions and square footage shown, indicated, or stated are approximate and may vary from these art drawings of interior space. Impression Homes reserves the right to change features, prices, and design details without prior notice or obligation. Interior space drawings and exterior paintings are artistic interpretations of concepts and are not drawn to scale. Plan numbers are not intended to represent square footage.

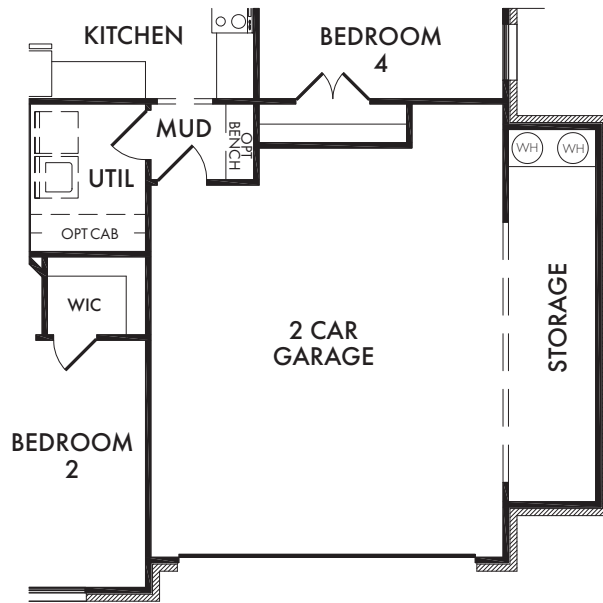


**OPTIONAL
EXTENDED COVERED PATIO**

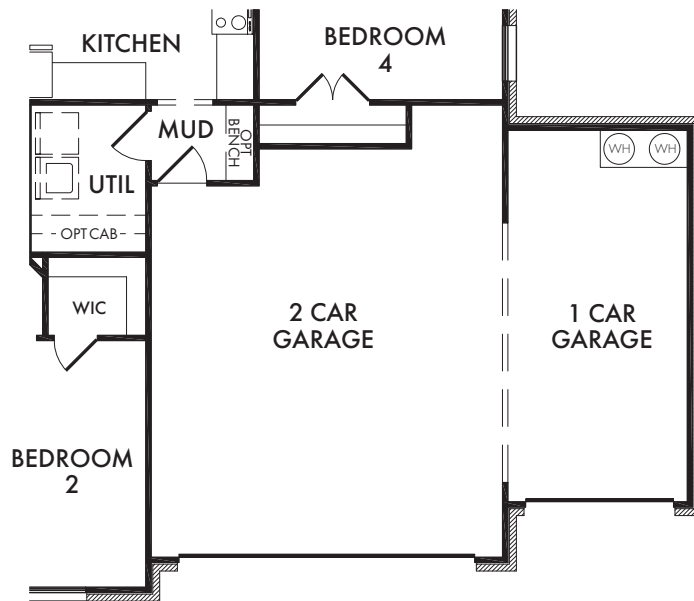
OPT. #151

Living Smarter technology locations are indicated as follows:  = Pre-Wired for Wireless Access Point(s) and  = RG-6 & Cat6 Media Outlet(s). Ask your sales consultant for more details. Any dimensions and square footage shown, indicated, or stated are approximate and may vary from these art drawings of interior space. Impression Homes reserves the right to change features, prices, and design details without prior notice or obligation. Interior space drawings and exterior paintings are artistic interpretations of concepts and are not drawn to scale. Plan numbers are not intended to represent square footage.





**OPTIONAL
5' GARAGE EXTENSION**
OPT. #112



OPTIONAL 3 CAR GARAGE
OPT. #110

Living Smarter technology locations are indicated as follows: 🏠 = Pre-Wired for Wireless Access Point(s) and 📶 = RG-6 & Cat6 Media Outlet(s). Ask your sales consultant for more details. Any dimensions and square footage shown, indicated, or stated are approximate and may vary from these art drawings of interior space. Impression Homes reserves the right to change features, prices, and design details without prior notice or obligation. Interior space drawings and exterior paintings are artistic interpretations of concepts and are not drawn to scale. Plan numbers are not intended to represent square footage.