



ELEVATION A

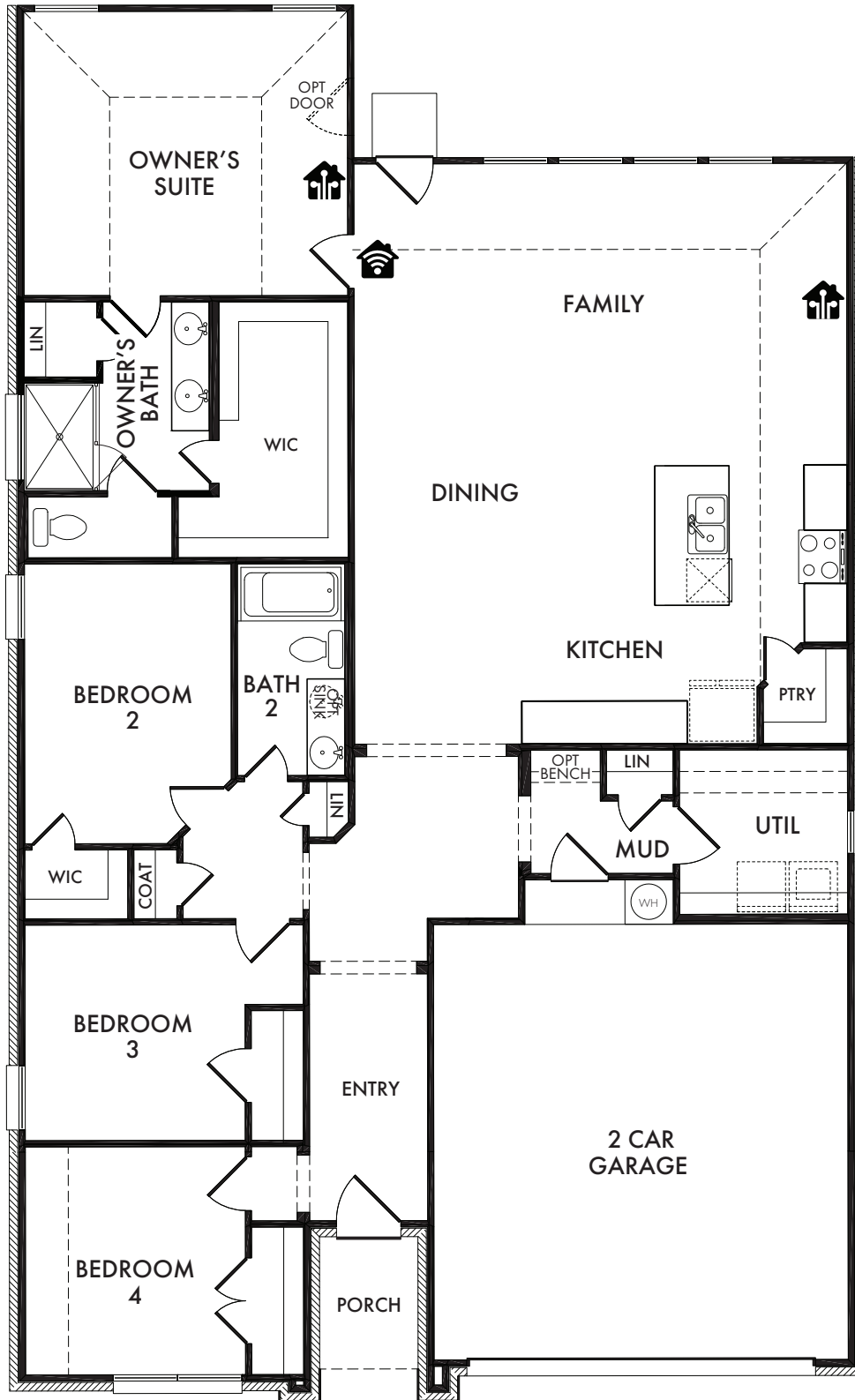


ELEVATION B




ELEVATION C





 Start *Living Smarter* with Impression Homes.

Living Smarter technology locations are indicated as follows:  = Pre-Wired for Wireless Access Point(s) and  = RG-6 & Cat6 Media Outlet(s). Ask your sales consultant for more details. Any dimensions and square footage shown, indicated, or stated are approximate and may vary from these art drawings of interior space. Impression Homes reserves the right to change features, prices, and design details without prior notice or obligation. Interior space drawings and exterior paintings are artistic interpretations of concepts and are not drawn to scale. Plan numbers are not intended to represent square footage.



ELEVATION I

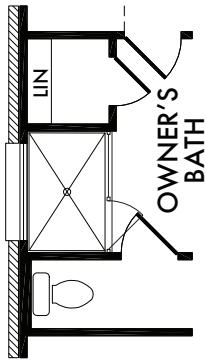


ELEVATION J

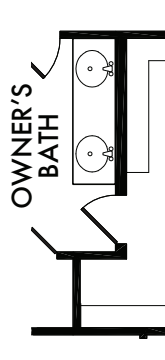


ELEVATION K

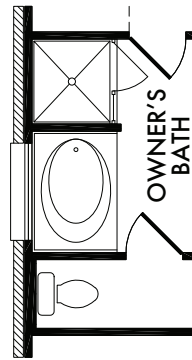




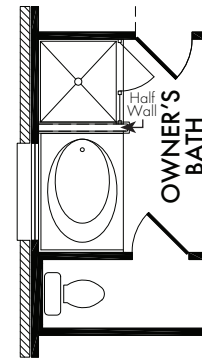
**OPTIONAL OWNER'S BATH**  
w/Shower Only  
*Included Standard*  
OPT. #220



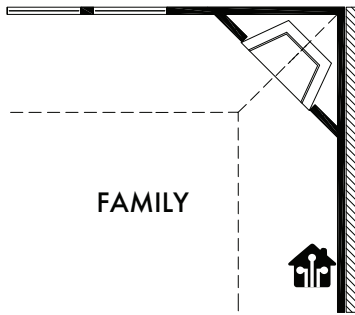
**OPTIONAL OWNER'S BATH**  
w/Double Sink Vanity  
*Included Standard*  
OPT. #206



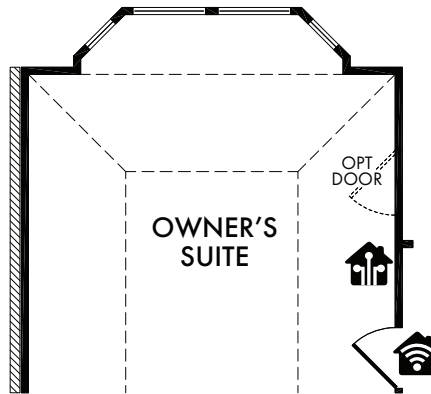
**OPTIONAL OWNER'S BATH**  
w/Full Wall  
OPT. #203



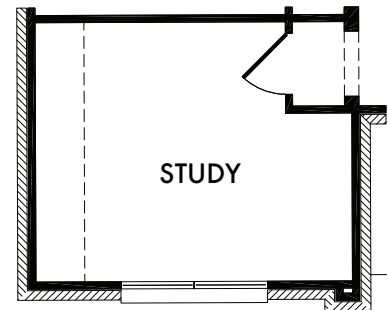
**OPTIONAL OWNER'S BATH**  
w/Half Wall  
OPT. #202



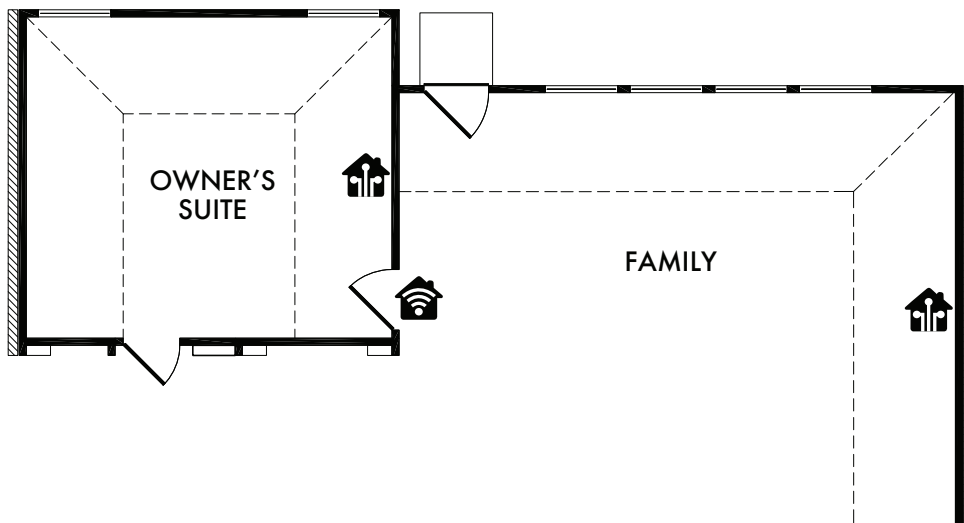
**OPTIONAL FIREPLACE**  
OPT. #300



**OPTIONAL BAY WINDOW**  
(Adds Approx. 24 sq. ft.)  
OPT. #130



**OPTIONAL STUDY**  
OPT. #120



**OPTIONAL 4' EXTENDED FAMILY ROOM**  
(Adds Approx. 95 sq. ft.)  
OPT. #113

Living Smarter technology locations are indicated as follows: 📶 = Pre-Wired for Wireless Access Point(s) and 📡 = RG-6 & Cat6 Media Outlet(s). Ask your sales consultant for more details. Any dimensions and square footage shown, indicated, or stated are approximate and may vary from these art drawings of interior space. Impression Homes reserves the right to change features, prices, and design details without prior notice or obligation. Interior space drawings and exterior paintings are artistic interpretations of concepts and are not drawn to scale. Plan numbers are not intended to represent square footage.